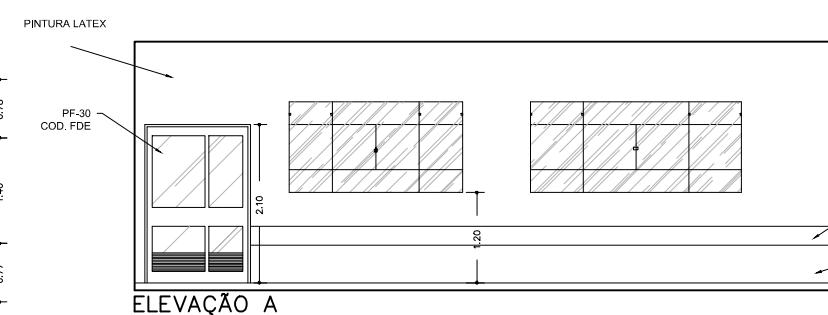
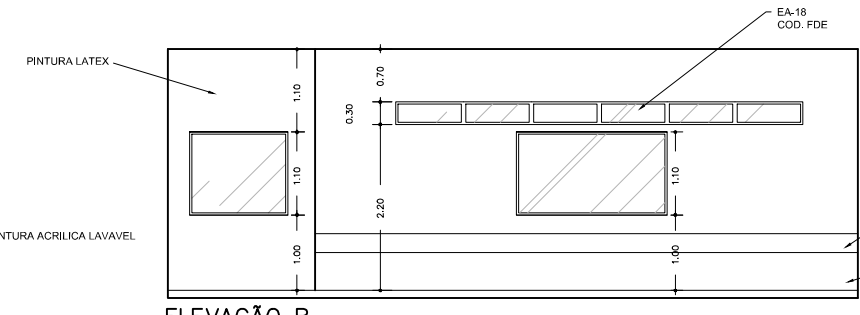


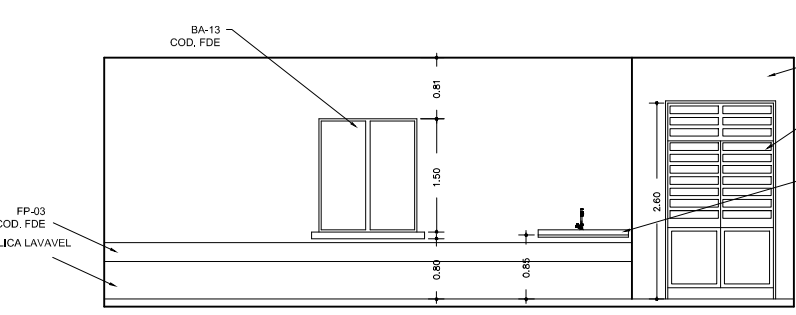
DETALHAMENTO COPA - TERREO



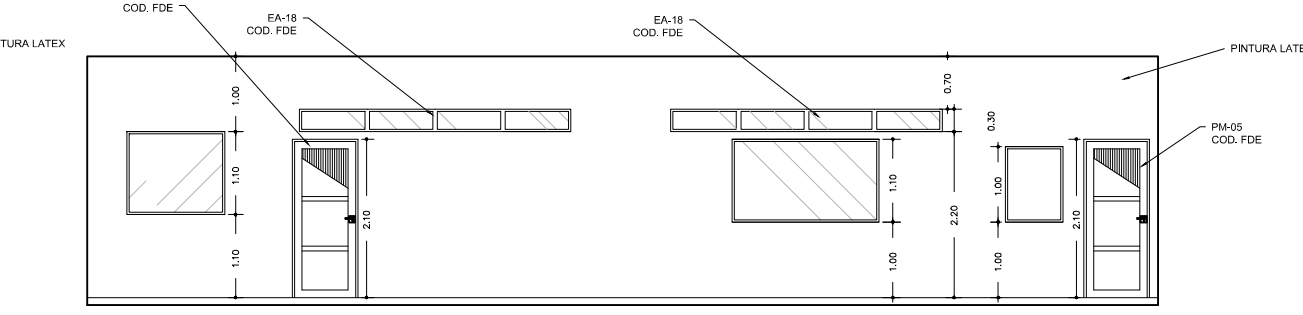
ELEVAÇÃO A



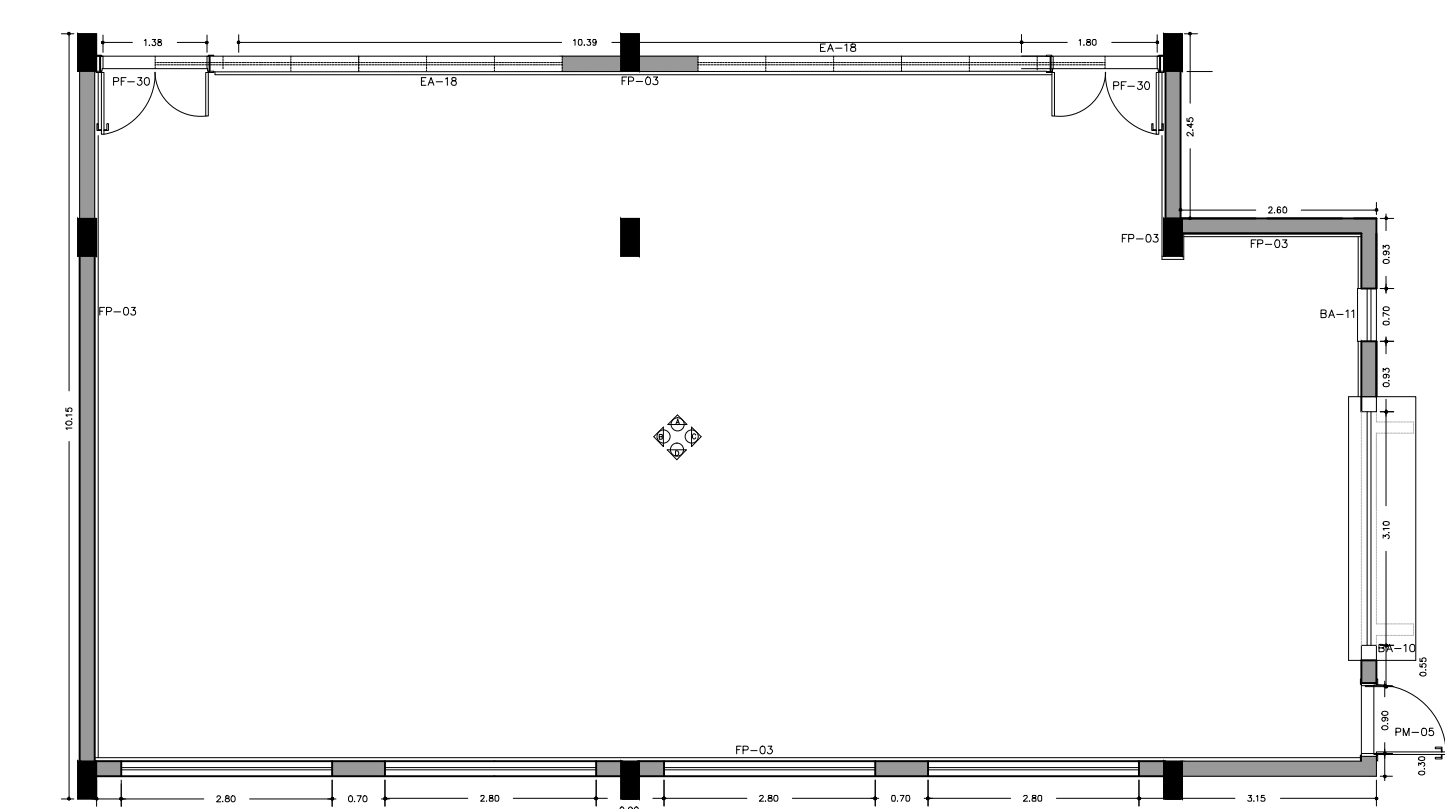
ELEVAÇÃO B



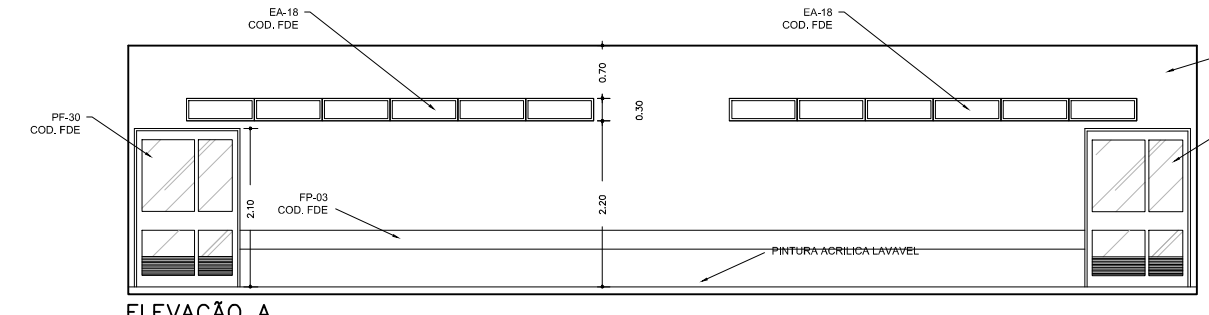
ELEVAÇÃO C



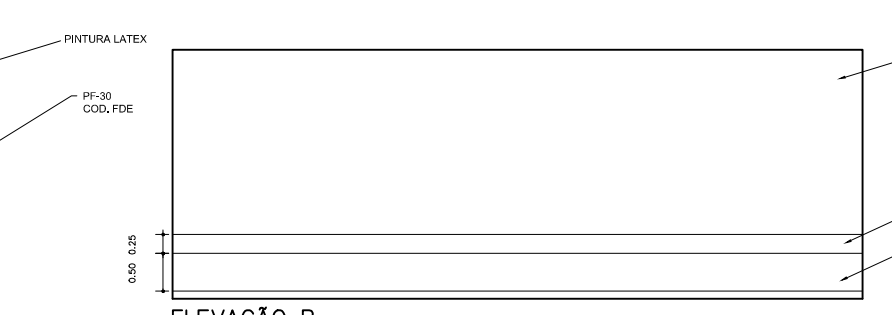
ELEVAÇÃO D



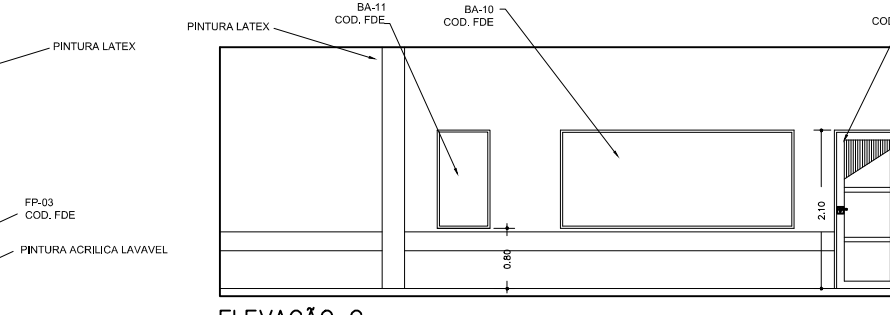
DETALHAMENTO REFEITÓRIO - TERREO



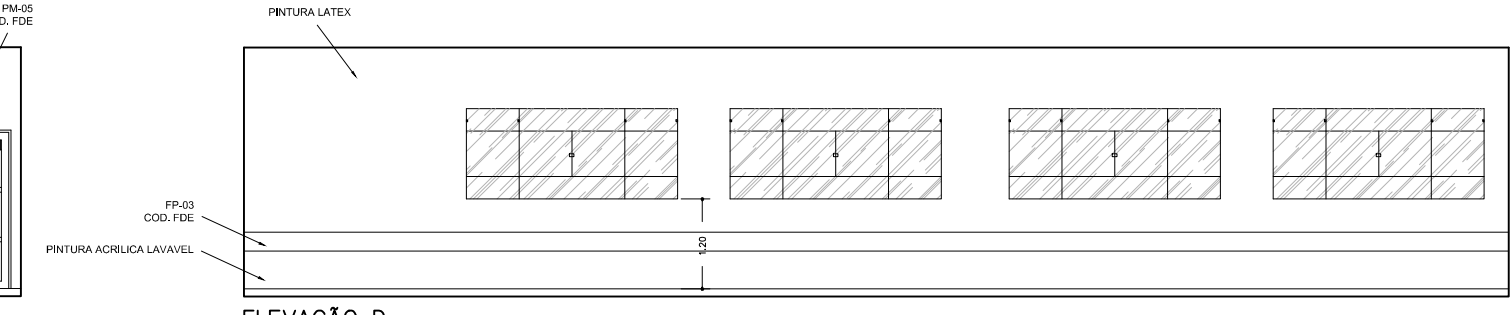
ELEVAÇÃO A



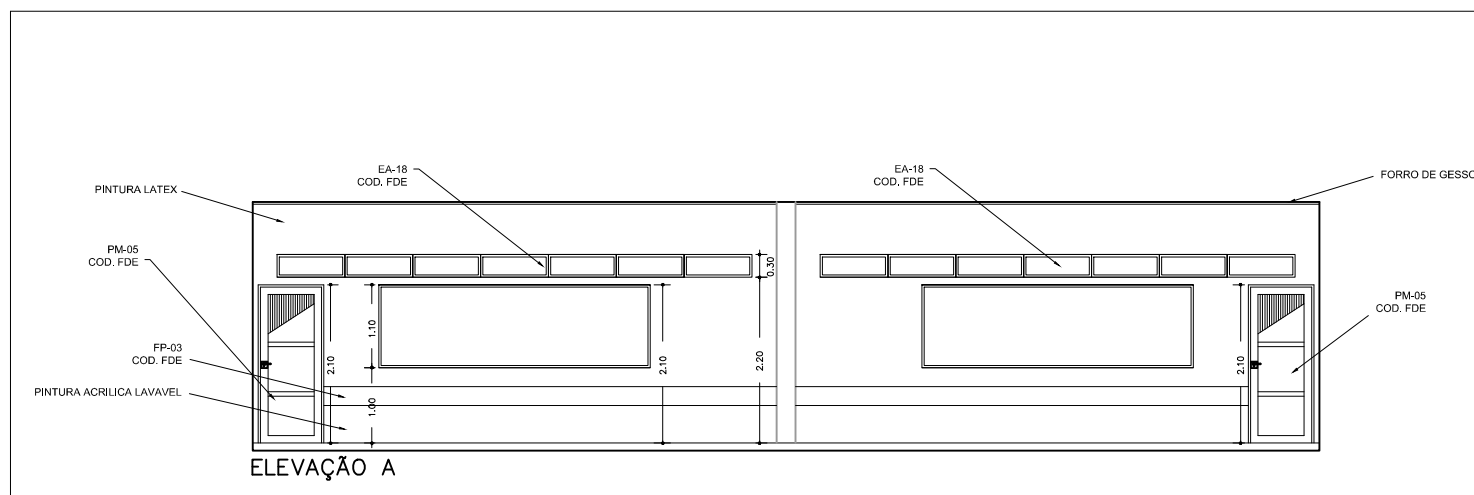
ELEVAÇÃO B



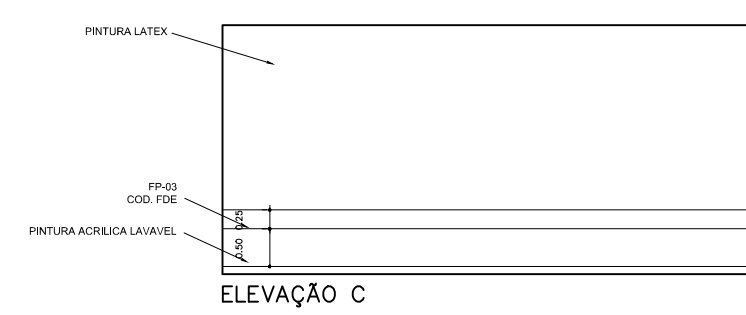
ELEVAÇÃO C



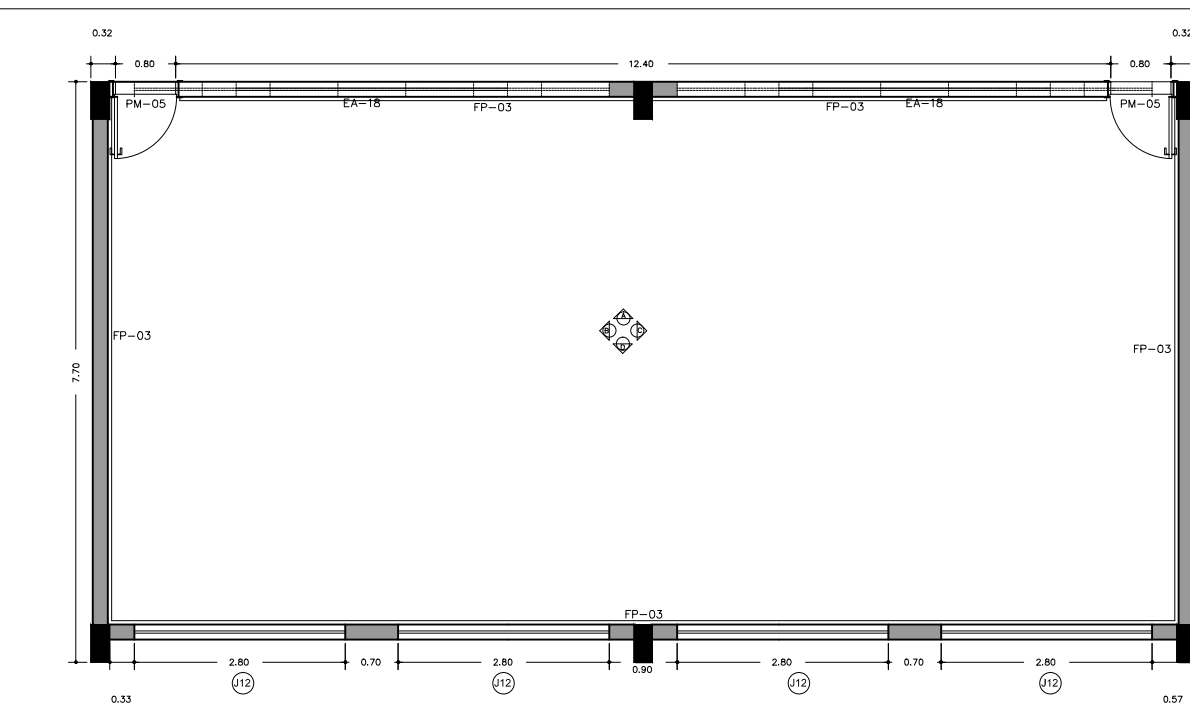
ELEVAÇÃO D



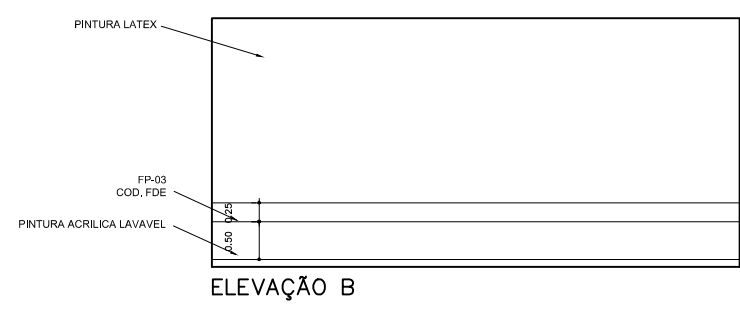
ELEVAÇÃO A



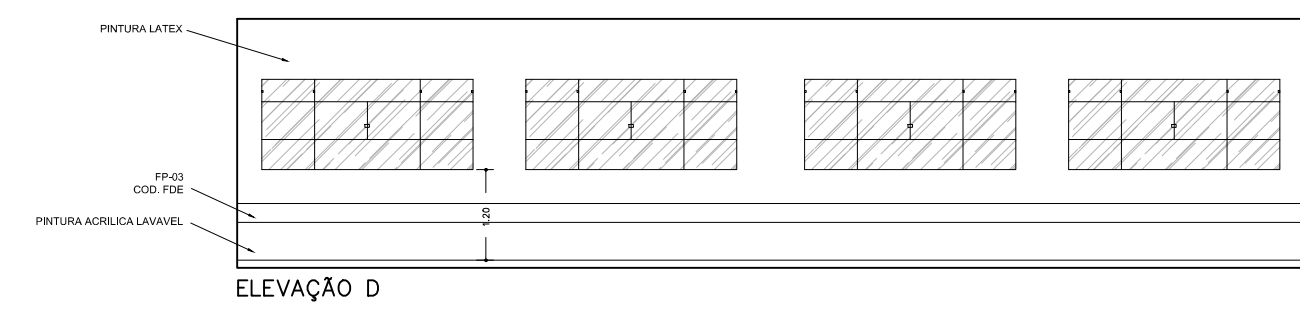
ELEVAÇÃO C



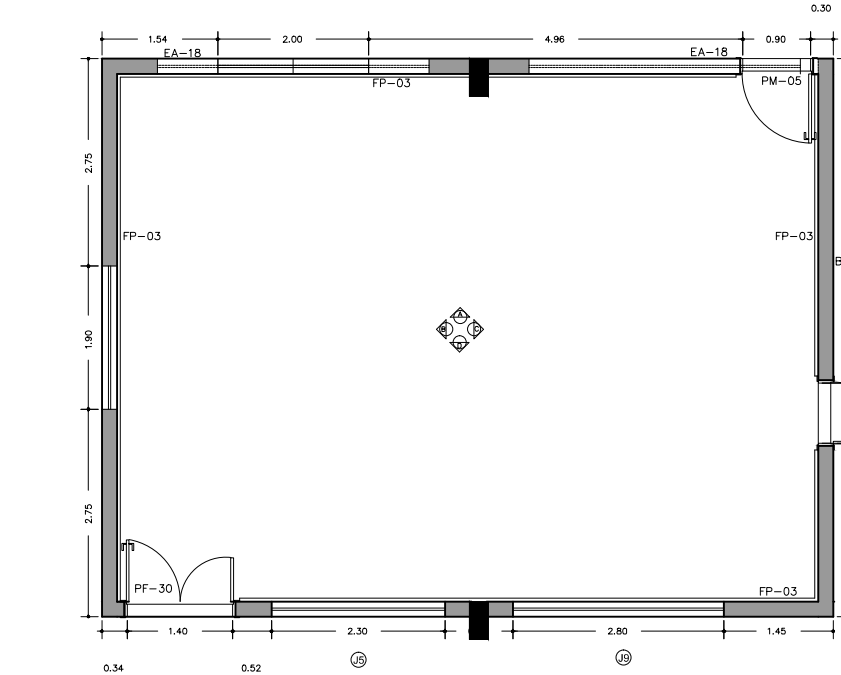
DETALHAMENTO BRINQUEDOTECA - SUPERIOR



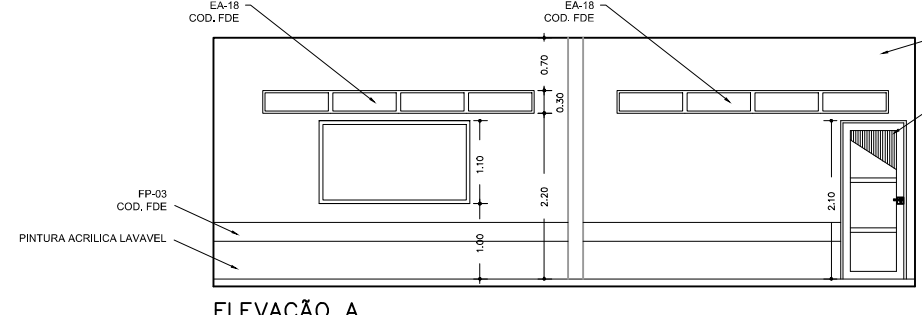
ELEVAÇÃO B



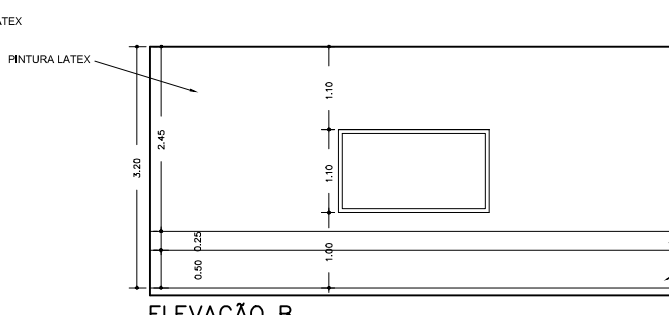
ELEVAÇÃO D



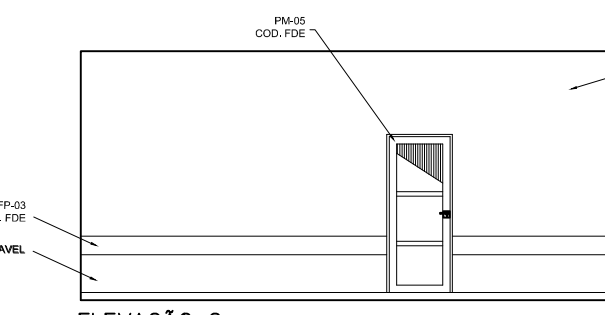
DETALHAMENTO BERÇARIOS - TERREO



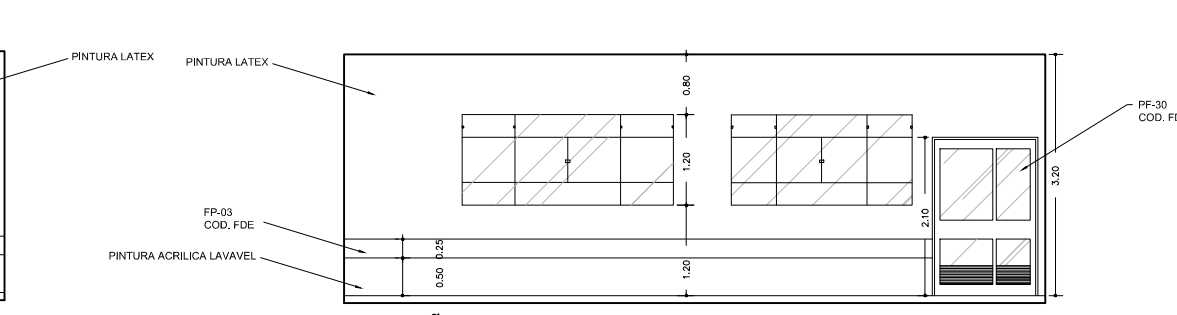
ELEVAÇÃO A



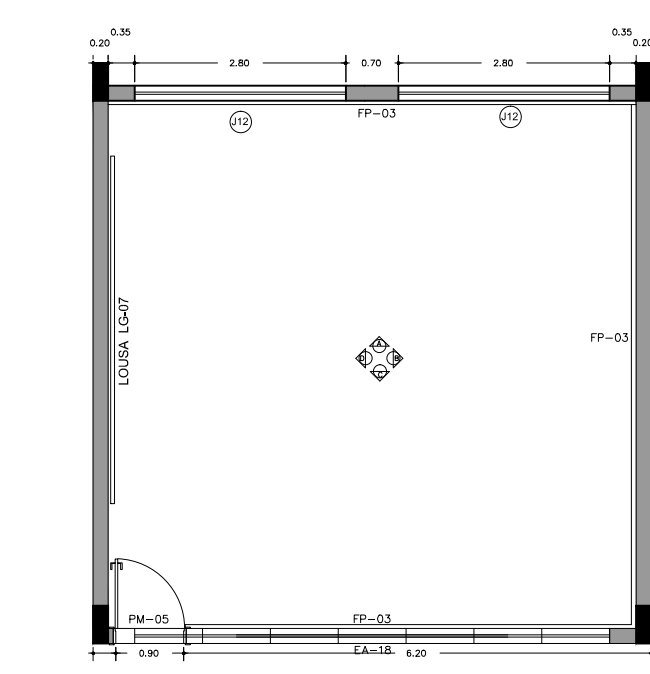
ELEVAÇÃO B



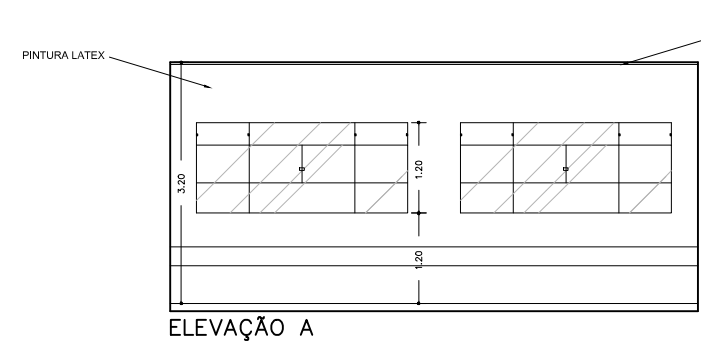
ELEVAÇÃO C



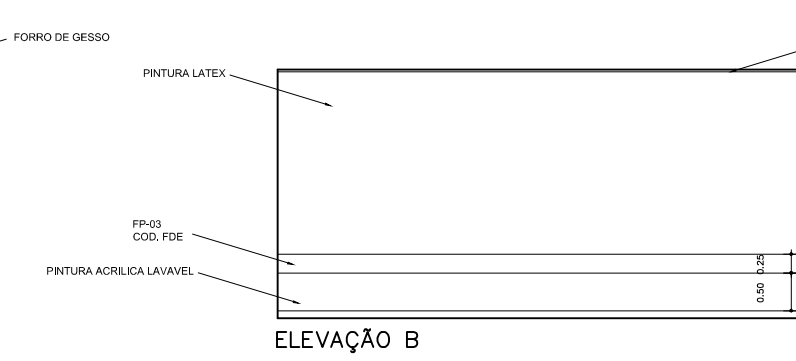
ELEVAÇÃO D



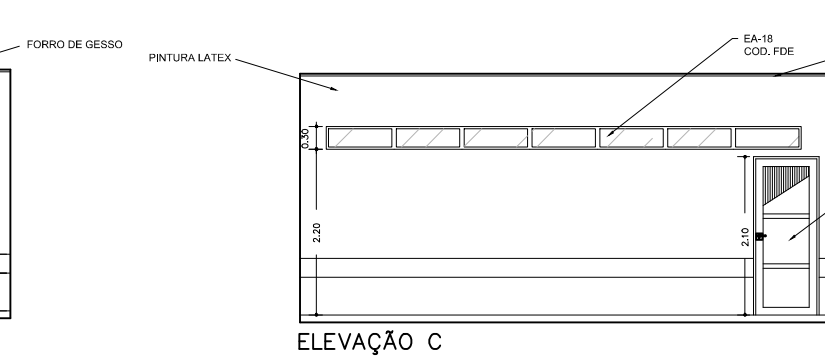
DETALHAMENTO MATERNAL - SUPERIOR



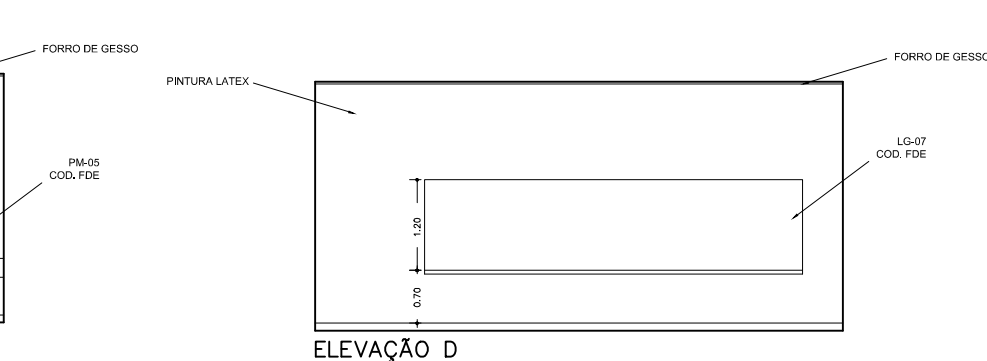
ELEVAÇÃO A



ELEVAÇÃO B



ELEVAÇÃO C



ELEVAÇÃO D

PROJETO ARQUITETÔNICO

Folha:
08/09

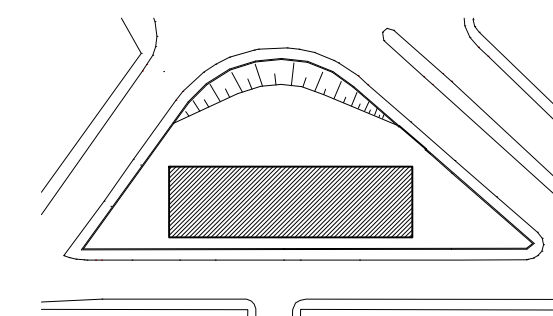
EMEI NOVA ITAPETININGA

ASSUNTO: DETALHAMENTO DAS SALAS

LOCAL: AVENIDA JOSÉ SANTANA DE OLIVEIRA
ITAPETININGA-SP

ESCALAS: 1:100

PLANTA DE SITUAÇÃO SEM ESCALA



DECLARO QUE A APROVAÇÃO DO PROJETO,
NÃO IMPLICA NO RECONHECIMENTO, POR
PARTE DA PREFEITURA DO DIREITO DE
PROPRIEDADE DO TERRENO.

PREFEITO MUNICIPAL

QUADRO DE ÁREAS

ÁREA DO TERRENO: 2200.89M2
PAVIMENTO TERREO: 963.87M2
PAVIMENTO SUPERIOR: 821.80M2

TOTAL À CONSTRUIR: 1785.67M2

RESPONSÁVEL TÉCNICO
ARQ. TIAGO RIBEIRO BARBOSA
CAU: A74168-0